

## THE ART EFFECT

### *The Translational Ecology of Contemporary Art*

In conjunction with the Loris Gréaud exhibition at the Dallas Contemporary opening 1-17-15, The Arts & Technology program and The Center for Translation Studies at The University of Texas at Dallas are hosting a panel discussion with local and international distinguished figures in contemporary art & art education. The objective of this forum is the intellectual investigation of translation, postproduction and relations in the context of contemporary art.

## PANEL

Frank Dufour, Director of Graduate Studies, ATEC, UTD & Artist (Moderator)  
Justine Ludwig, Senior Curator, dallas contemporary  
Noah Simblist, Chair & Associate Professor SMU & Artist  
Charissa Terranova, Associate Professor of Aesthetic Studies, UTD & Art Critic

&

Distinguished International Guests:

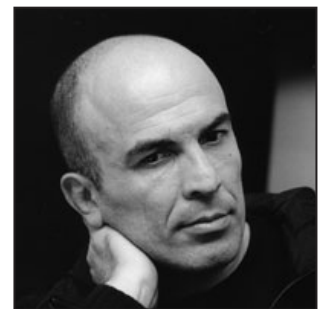


### Nicolas Bourriaud

Nicolas is currently Director of the École Nationale Supérieure des Beaux-arts in Paris, curator, art critic and theorist. From 2007 to 2010, Bourriaud was curator for contemporary art at The Tate Britain in London, where he organized, *Altermodern*. From 1999 to 2006, he was also curator of contemporary art and co-director of Palais de Tokyo. Commissioner of Biennales in Lyons, Moscow and Athens (2005-2011) Bourriaud has curated numerous exhibitions worldwide. He is the founder of the art journals *Documents sur l'Art* and *Revue Perpendiculaire* and is a published author whose essays *Relational Aesthetics*, *Postproduction* and *The Radicant* have been translated into fifteen languages.

### Éric Mangion

Eric Mangion has been Director of the National Centre of Contemporary Art of the Villa Arson in Nice, France since 2006, where he programmed an exhibition cycle conceived from ephemeral practices (sound, poetry or performance). From 1993 to 2005 he directed the FRAC Provence-Alpes-Côte d'Azur. He is an active art critic writing for an array of venues, including *Art Press*, Mangion investigates the function of "disappearance" as an artistic gesture, whether it be a matter of concealment, covering up, destruction, theft, vandalism, or simply the disappearance of the artist, thus analyzing how disappearance accompanies theoretically and formally the creation of our time.



### special appearance by Loris Gréaud

Loris Gréaud is a transdisciplinary artist based in Paris, France. Gréaud creates transformative experiences that challenge the senses and confront the viewer with otherworldly landscapes. Gréaud is the first artist to use the entire space of the Palais de Tokyo for an exhibition titled, "Cellar Doors," while concurrently showing performative works titled "[I]" in the Louvre and and in the Centre Pompidou. For more information see: [lorisgreaud.com](http://lorisgreaud.com)

Featured :

Cover - *PATRON Magazine*, January, 2015, "The Gréaud Effect" by Frank Dufour